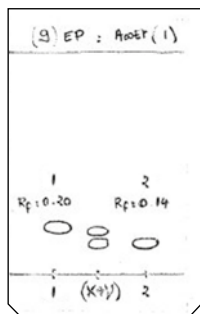


1. TLC method development



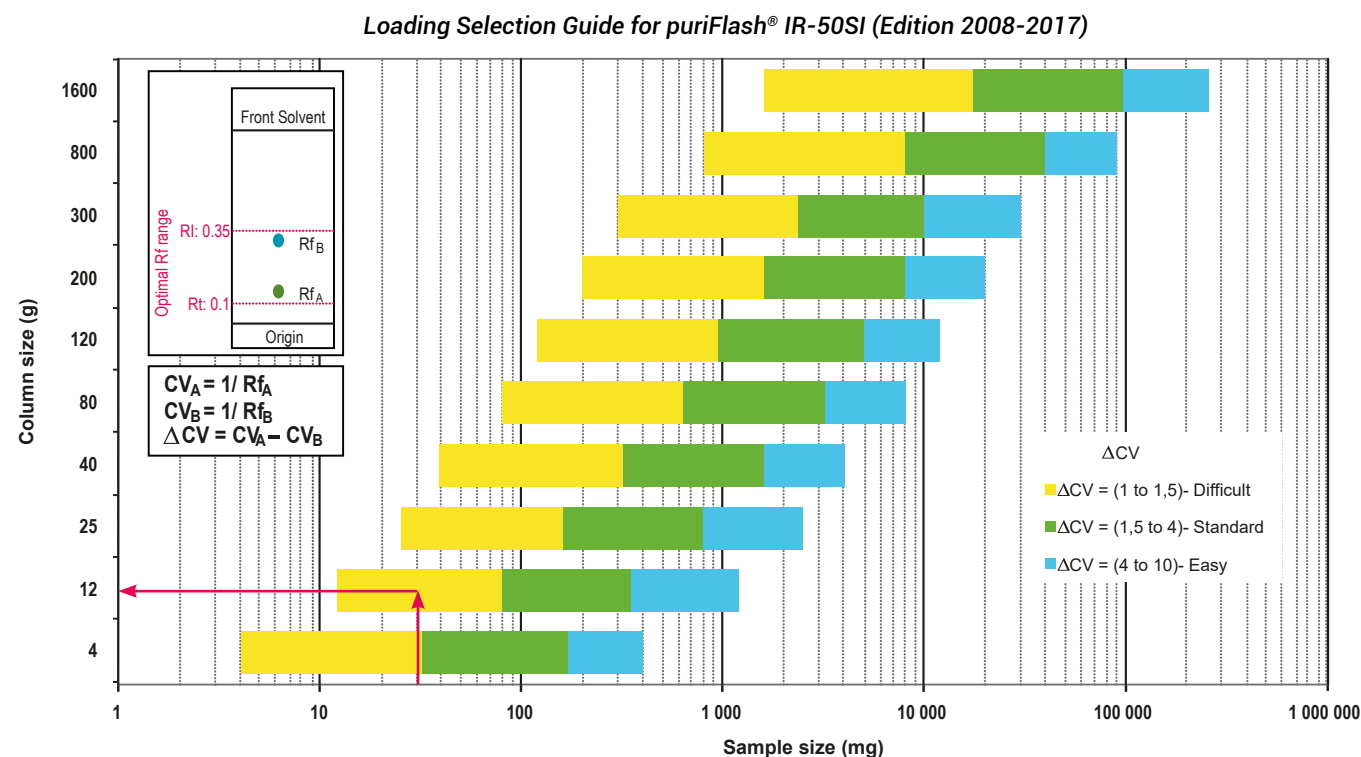
Mobile phase:
90% Petroleum Ether/Ethyl Acetate 10%

Compound	Rf	CV
1	0.20	5.00
2	0.14	7.14

$$\Delta CV_{2-1} = 2.14$$

2. Choice of the column according to the ΔCV & crude sample mass

Crude sample: 30mg
Column: PF-15SIHP-F0012
Loading capacity: 0.25%



Customer has chosen to use PF-15SIHP-F0012 column to obtain a better separation (efficiency & purity) than with a IR-50SI-F0012 column.

3. Flash conditions

Device: puriFlash® 430-iELSD (or now puriFlash® 5.020 pack iELSD)

Solvents: A: Petroleum Ether
B: Ethyl Acetate

Column: PF-15SIHP-F0012

Flow rate: 20mL/min

Injection mode: Solid deposit with celite (Dry-load F0004)

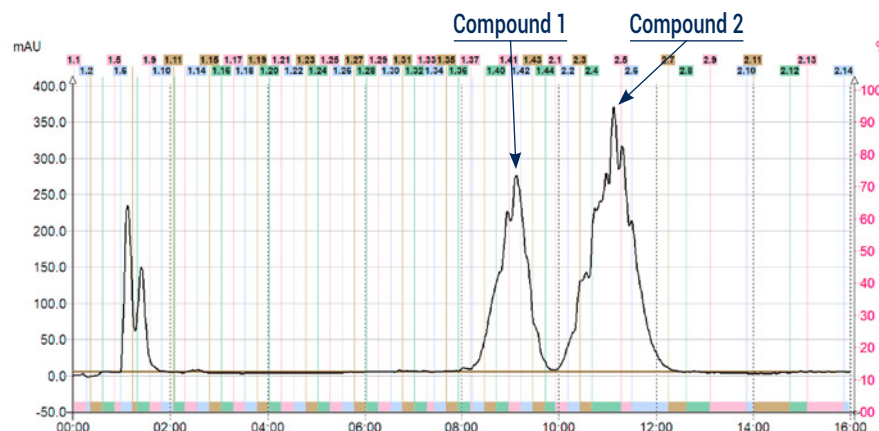
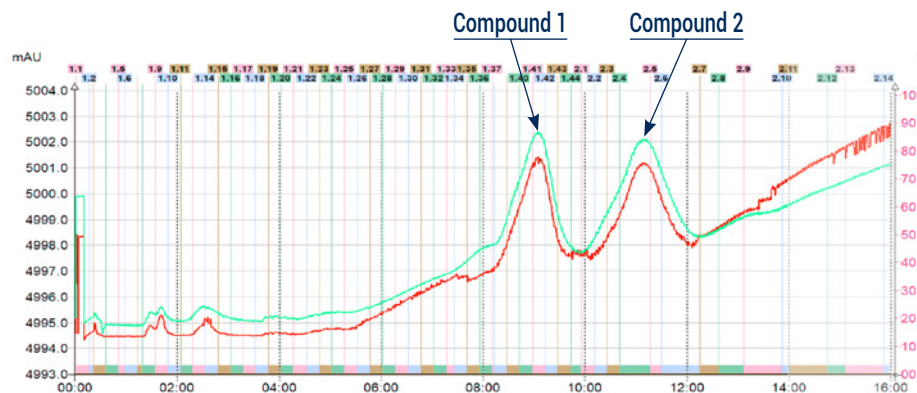
Crude sample: 30mg

Detection: UV Scan 250-350nm (orange), UV 254nm (green),
ELSD (35°C, Gain: 7) (Black)

Mode: Automatic Gradient Optimization

Elution conditions:

CV	A (%)	B (%)
0	90	10
2.42	90	10
5.79	84	16
9.47	84	16
21.89	60	40



To achieve this purification:

You will need

- puriFlash® 5.020
[Discover it](#) [Add to card](#)
- Integrated ELSD
[Discover it](#) [Add to card](#)
- puriFlash® column PF-15SIHP-F0012
[Discover it](#) [Add to card](#)
- puriFlash® Dry-load PF-DLE-F0004
[Discover it](#) [Add to card](#)

We highly recommend

- Compressor for integrated ELSD without quiet cover 1H3490 [Add to card](#)
- Extractor with 2 extraction tubes + kit AYHDZO [Add to card](#)
- Ballasting for 1/8" tubing - 5 units DZ7360 [Add to card](#)

Download our App

"TLC to Flash & Prep Chromatography" to make your TLC developments easier and faster.

