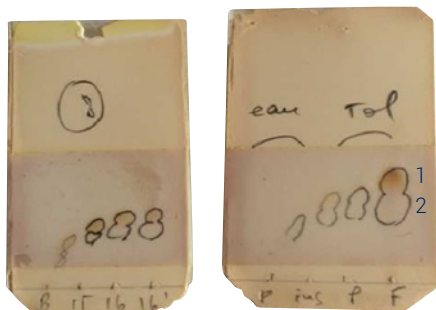


1. TLC method development



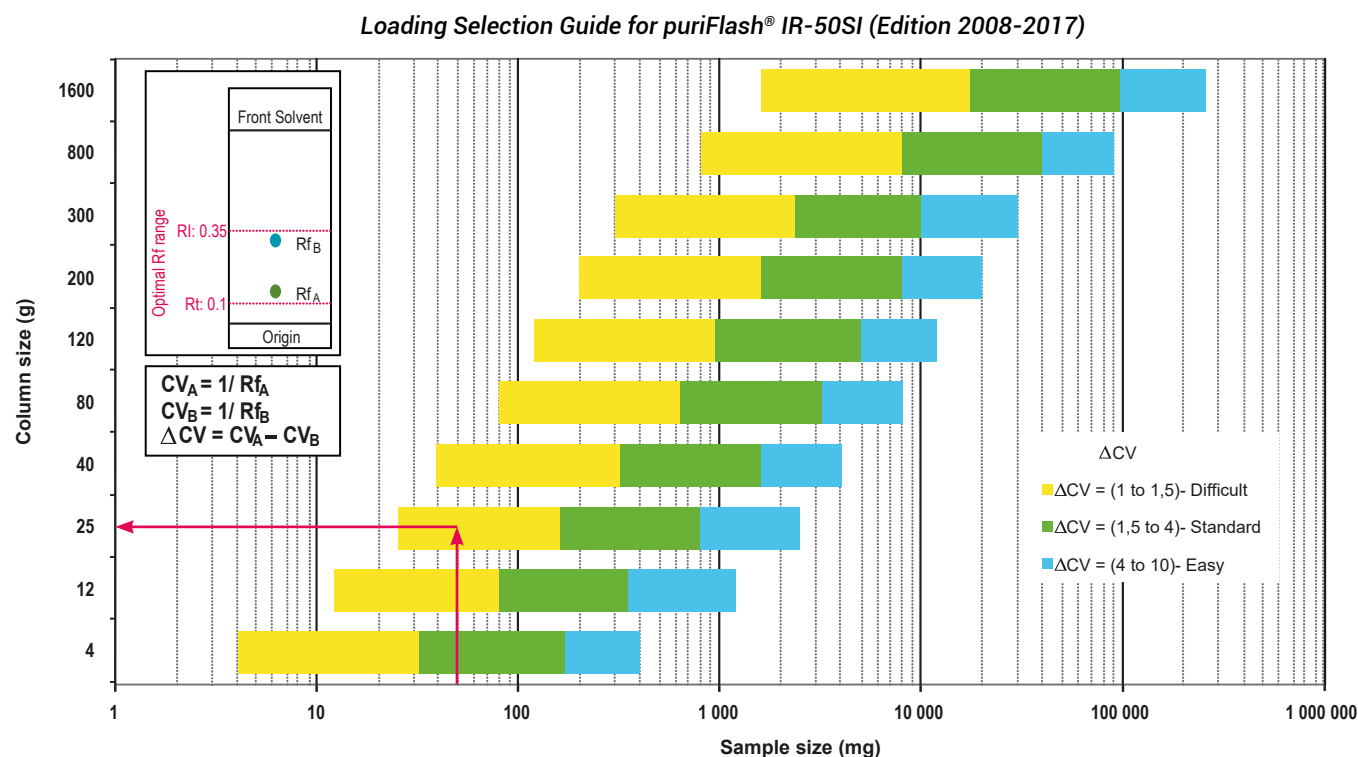
Mobile phase:
70% Cyclohexane / Ethyl Acetate 30%

| Compound | Rf | CV |
|----------|------|------|
| 1 | 0.37 | 2.7 |
| 2 | 0.26 | 3.74 |

$\Delta CV_{2-1} = 1.04$

2. Choice of the column according to the ΔCV & crude sample mass

Crude sample: 50mg
Column: PF-15SIHP-F0025
Loading capacity: 0.2%



Customer has chosen to use PF-15SIHP-F0025 column to obtain a better separation (efficiency & purity) than with a IR-50SI-F0025 column.

3. Flash conditions

Device: puriFlash® 430 (or now puriFlash® 5.020)

Solvents: A: Cyclohexane

B: Ethyl acetate

Column: PF-15SIHP-F0025

Flow rate: 15mL/min

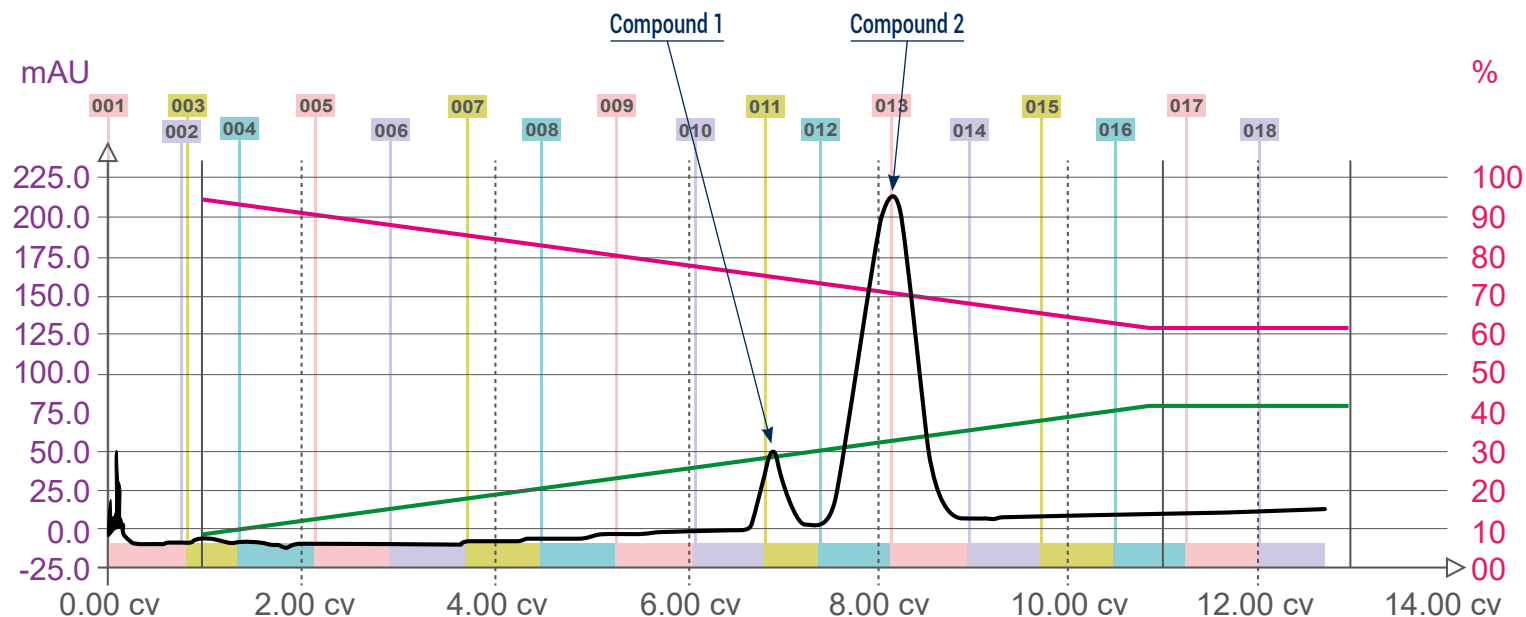
Injection mode: Liquid injection

Injection volume: 100µL (50mg of crude sample)

Detection: UV 254nm

Elution conditions:

| CV | A (%) | B (%) |
|----|-------|-------|
| 0 | 94 | 6 |
| 1 | 94 | 6 |
| 11 | 60 | 40 |
| 13 | 60 | 40 |



The customer was satisfied with the purification of these 2 compounds which were never separated on Glass column.

To achieve this purification:

You will need

- puriFlash® 5.020
[Discover it](#) [Add to card](#)
- puriFlash® column PF-15SIHP-F0025
[Discover it](#) [Add to card](#)

We highly recommend

- Ballasting for 1/8" tubing - 5 units
DZ7360 [Add to card](#)
- Tubes 18x180mm
1Q5350 [Add to card](#)
- Tube holding claw 18mm
AYHED0 [Add to card](#)

Download our App

"TLC to Flash & Prep Chromatography" to make your TLC developments easier and faster.

