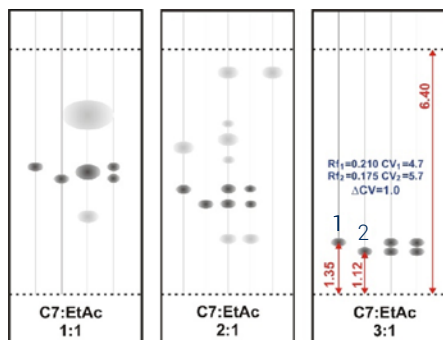




1. TLC method development

1 and 2: isomers



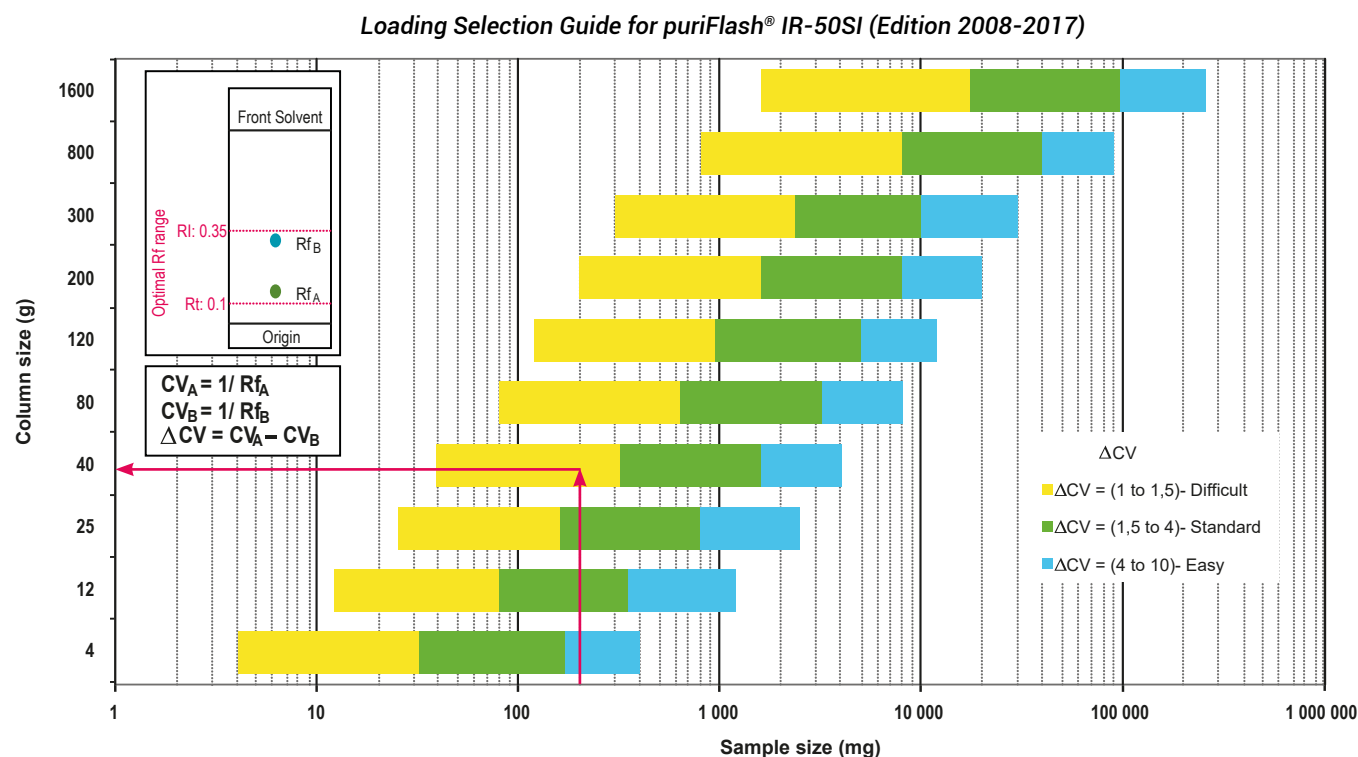
Mobile phase:
75% Cyclohexane / Ethyl Acetate 25%

Compound	Rf	CV
1	0.210	4.7
2	0.175	5.7

$\Delta CV_{2-1} = 1.0$

2. Choice of the column according to the ΔCV & crude sample mass

Crude sample: 200mg
Column: PF-15SIHP-F0025
Loading capacity: 0.4%



Customer has chosen to stack 2 columns PF-15SIHP-F0025 to increase the silica height and obtain a better separation (efficiency & purity) than with 1 column IR-50SI-F0040.

3. Flash conditions

Device: puriFlash® 450 (or now puriFlash® 5.050)

Solvents: A: Cyclohexane

B: Ethyl Acetate

Column: PF-15SIHP-F0025 (x2)

Flow rate: 20mL/min

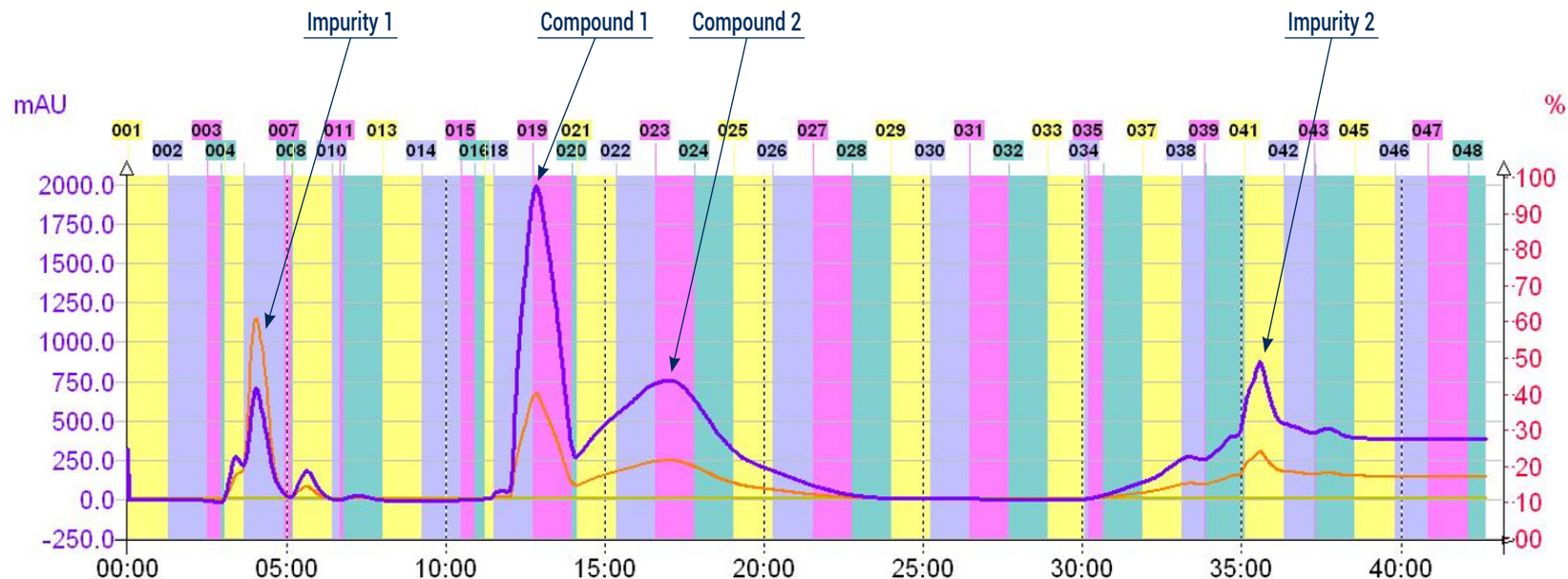
Injection mode: Liquid injection

Crude sample: 200mg

Detection: UV 232nm (Purple),
Scan 220-600nm (Orange)

Elution conditions:

t (min)	A (%)	B (%)
00:00	80	20
26:00	80	20
32:00	50	50
42:00	50	50



To achieve this purification:

You will need

- puriFlash® 5.050
[Discover it](#) [Add to card](#)
- puriFlash® column PF-15SIHP-F0025
[Discover it](#) [Add to card](#)

We highly recommend

- Ballasting for 1/8" tubing - 5 units
DZ7360 [Add to card](#)
- 16x150mm Rack
AYHE40 [Add to card](#)
- Tubes 16x150mm
BX5400 [Add to card](#)

Download our App

"TLC to Flash & Prep Chromatography"
to make your TLC developments easier
and faster.

