

1. Analytical conditions

Solvents: A: Water

B: Acetonitrile

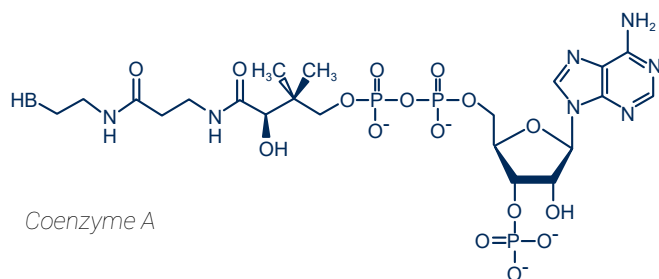
HPLC Column: XBridge 4.6x75mm BEH 2.5µm

Flow rate: 1mL/min

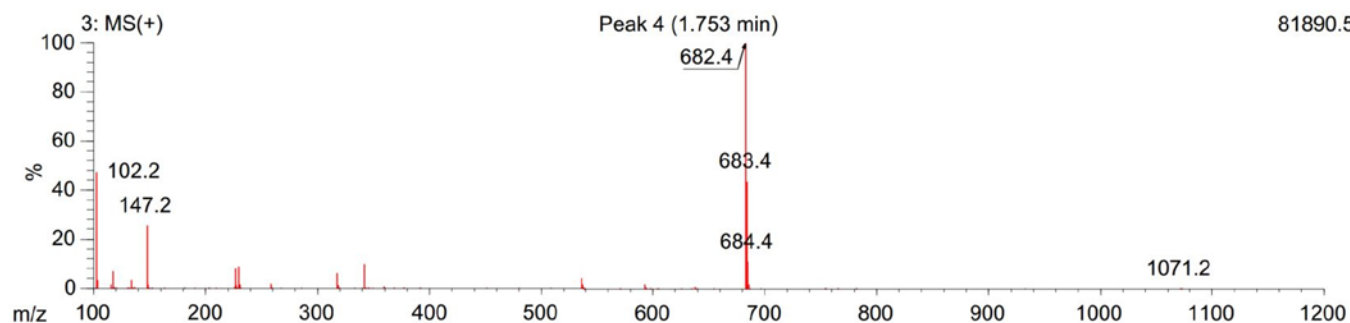
Injection mode: Liquid injection

Injection volume: 1µL

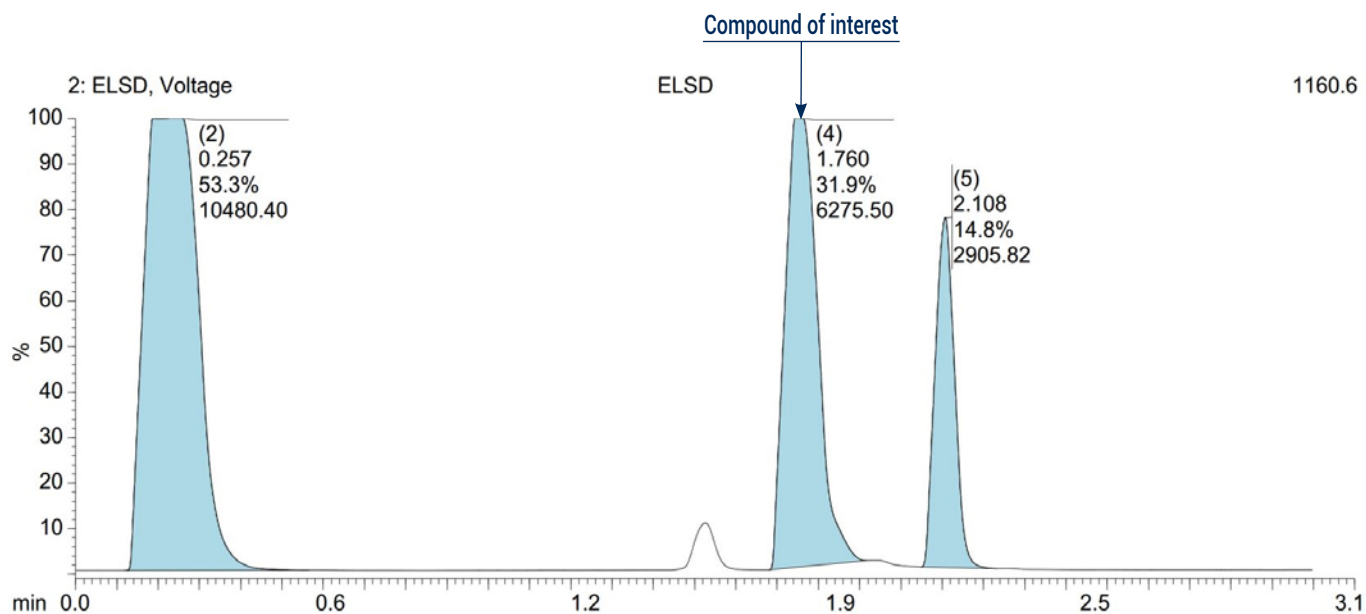
Detection: ELSD, UV 260nm



Coenzyme A



81890.5



1160.6

2. Flash conditions

Device: puriFlash® 4250 - Integrated ELSD (or now puriFlash® 5.250 pack iELSD)

Solvents: A: Water

B: Acetonitrile

Column: PF-15C18HQ-F0025 (x2)

Flow rate: 15mL/min

Injection mode: Liquid injection

Injection volume: 1mL (150mg of crude sample)

Detection: UV 260nm (Black),

Scan 200-260nm (Orange),

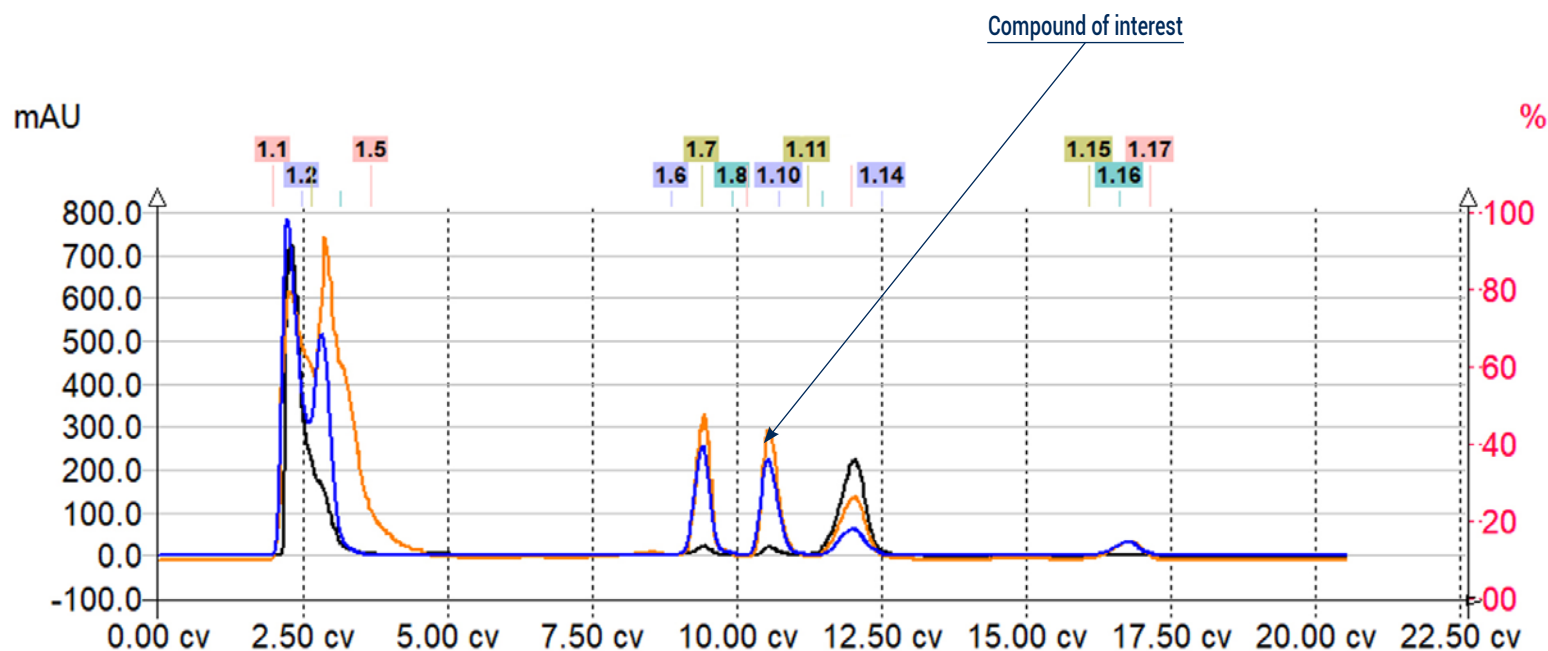
ELSD (T°: 50°C, automatic gain) (Blue)

Pressure: 8bar

Mode: Automatic Gradient Optimization

Elution conditions:

CV	A (%)	B (%)
0	90	10
3.5	90	10
8.2	32	68
11.7	32	68
14.5	0	100
22	0	100



More peaks than with UHPLC! Perfect separation although 15µm particle size compared to 2.5µm.

To achieve this purification:

You will need

- puriFlash® 5.250
[Discover it](#) [Add to card](#)
- puriFlash® Integrated ELSD
[Discover it](#) [Add to card](#)
- puriFlash® column PF-15C18HQ-F0025
[Discover it](#) [Add to card](#)

We highly recommend

- Trolley
AYHF20 [Add to card](#)
- Manometer ELSD
FJ6720 [Add to card](#)
- Compressor for integrated ELSD
without quiet cover
1H3490 [Add to card](#)

