

1. Analytical conditions

Solvents: A: Heptane

B: EtOH + 0.2%TFA

HPLC Column: Chiralpak AD 10 μ m 250X4.6mm

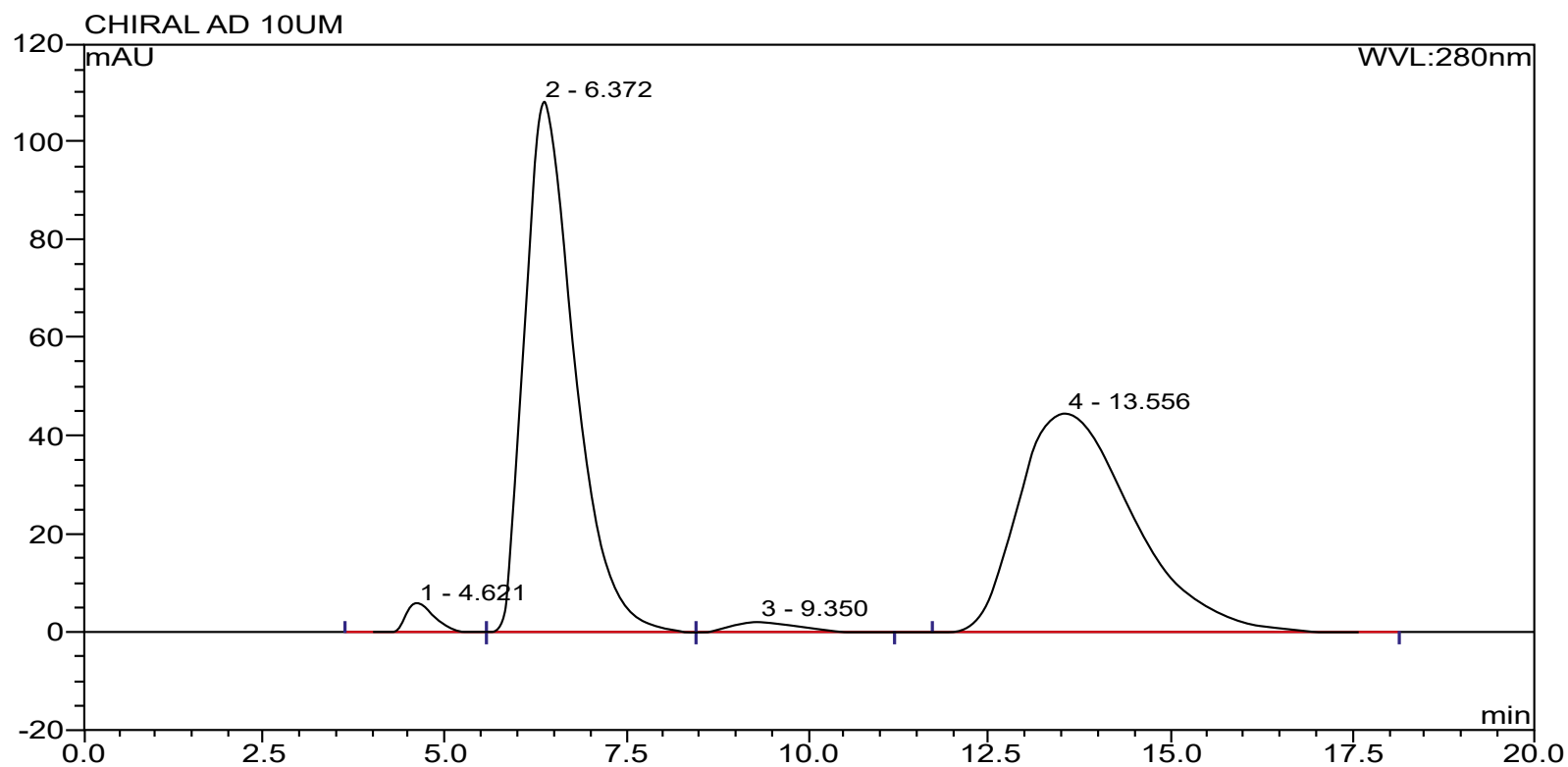
Flow rate: 1mL/min

Injection mode: Liquid injection

Crude sample: 2 μ g

Detection: UV

Elution conditions: 80% Heptane / Ethanol 20% (Isocratic mode)



2. Flash conditions

Device: puriFlash® 430 (or now puriFlash® 5.020)

Solvents: A: Heptane

B: EtOH + 0.2%TFA

Column: Chiralpak AD 20µm 250X15mm glass column

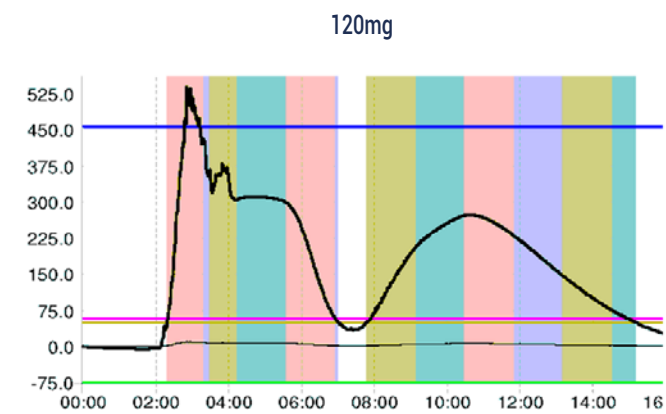
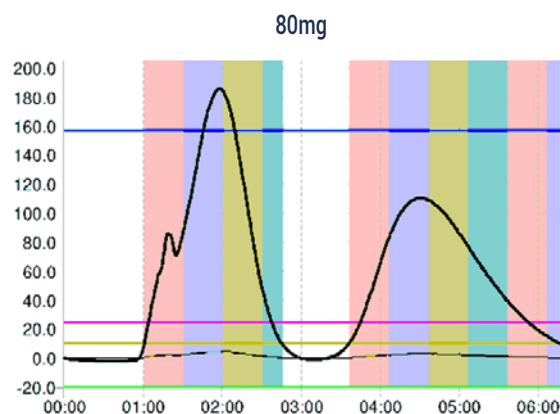
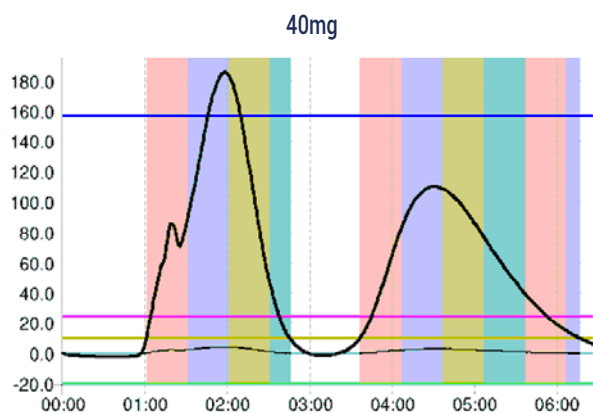
Flow rate: 11-30mL/min

Injection mode: Liquid injection

Crude sample: 40mg, 80mg, 120mg

Pressure: 2-15bar

Elution conditions: 80% Heptane / Ethanol 20% (Isocratic mode)



To achieve this purification:

You will need

- puriFlash® 5.020
[Discover it](#) [Add to card](#)

We highly recommend

- Magic box Flash AXF710 [Add to card](#)
- Ballasting for 1/8" tubing - 5 units DZ7360 [Add to card](#)
- Back pressure regulator 20psi + kit IO2360 [Add to card](#)

