



1. Analytical conditions

Solvents: A: Water

B: Acetonitrile

C: Ammonium formate in 50/50 ACN/Water

HPLC Column: Xbridge C18 250x4.6mm 5µm

Flow rate: 1mL/min

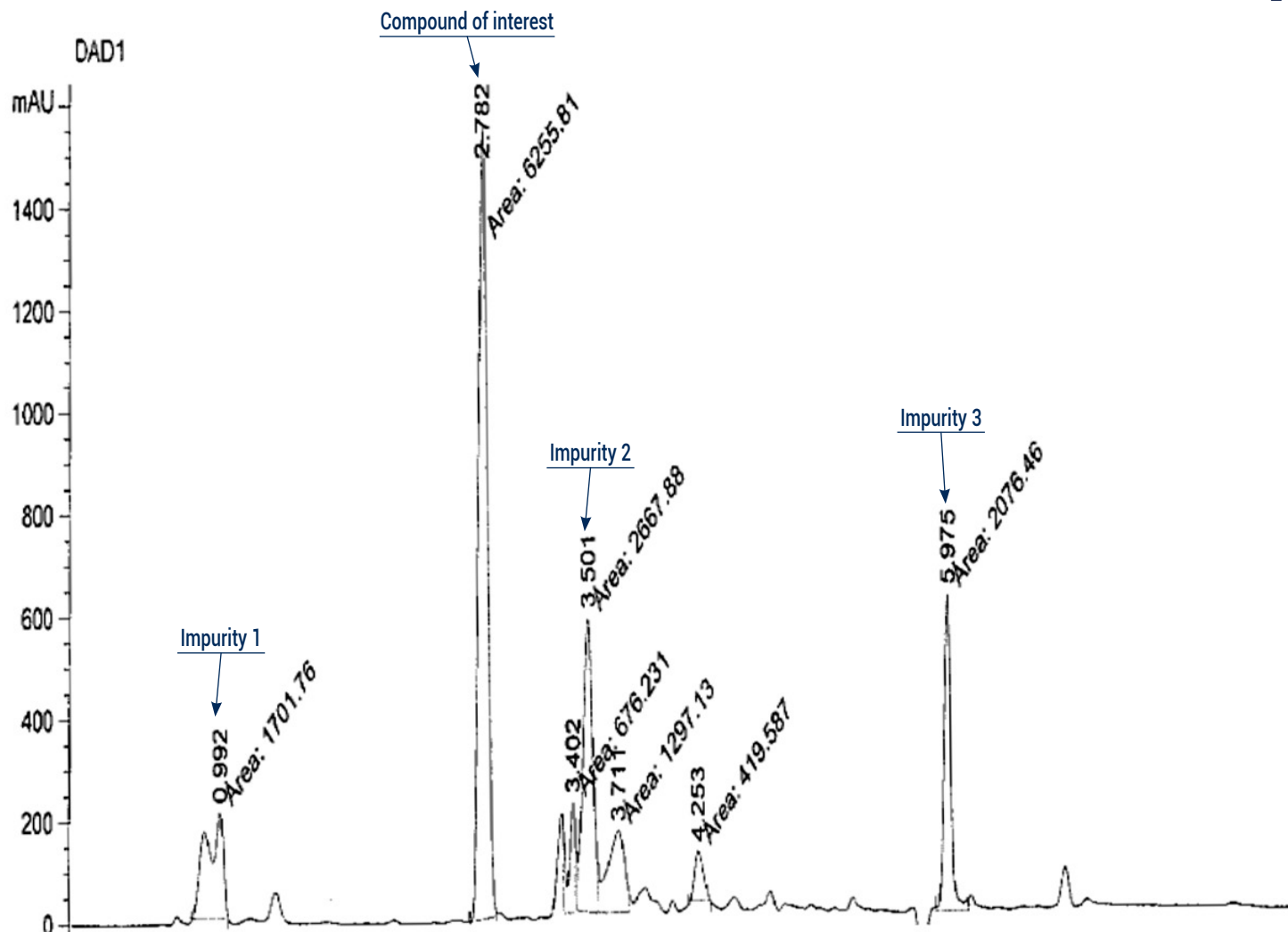
Injection mode: Liquid injection

Injection volume: 10µL

Detection: UV 254nm

Elution conditions:

t (min)	A (%)	B (%)	C (%)
00:00	85	5	10
01:00	85	5	10
06:00	5	85	10
08:00	5	85	10
08:30	85	5	10



2. Flash conditions

Device: puriFlash® 450 (or now puriFlash® 5.050)

Solvents: A: Water

B: Acetonitrile

C: Ammonium formate in 50/50 ACN/Water

Column: PF-15C18HP-F0025

Flow rate: 20mL/min

Injection mode: Solid deposit (Dry-load F0004)

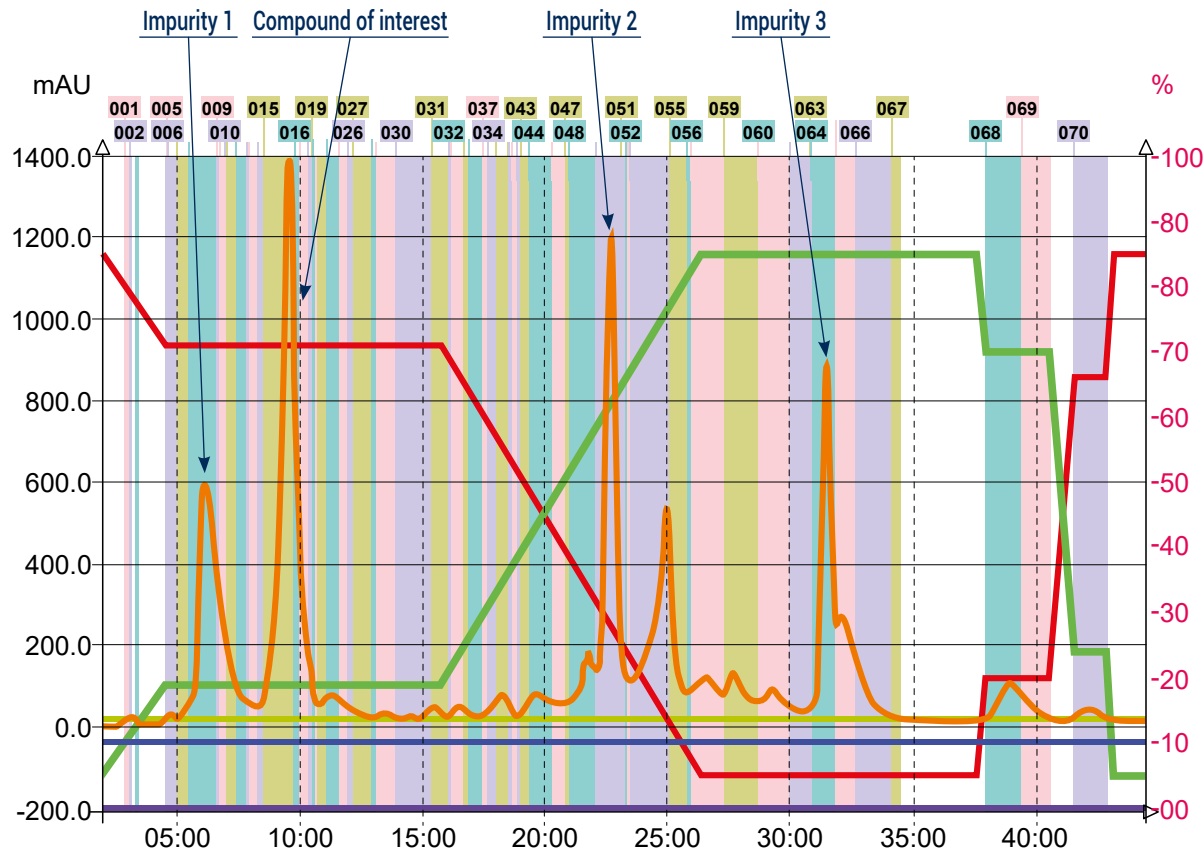
Crude sample: 150mg

Detection: UV 254nm

Pressure: 13bar

Elution conditions:

t (min)	A (%)	B (%)	C (%)
00:00	85	5	10
02:00	85	5	10
15:00	5	85	10
23:00	5	85	10
25:00	85	5	10
33:00	85	5	10



To achieve this purification:

You will need

- puriFlash® 5.050
[Discover it](#) [Add to card](#)
- puriFlash® column PF-15C18HP-F0025
[Discover it](#) [Add to card](#)
- puriFlash® Dry-load PF-DLE-F0004
[Discover it](#) [Add to card](#)

We highly recommend

- Extractor with 2 extraction tubes + kit
 AYHDZ0 [Add to card](#)
- Tube holding claw 18mm
 AYHEDO [Add to card](#)
- Tubes 18x180mm
 1Q5350 [Add to card](#)